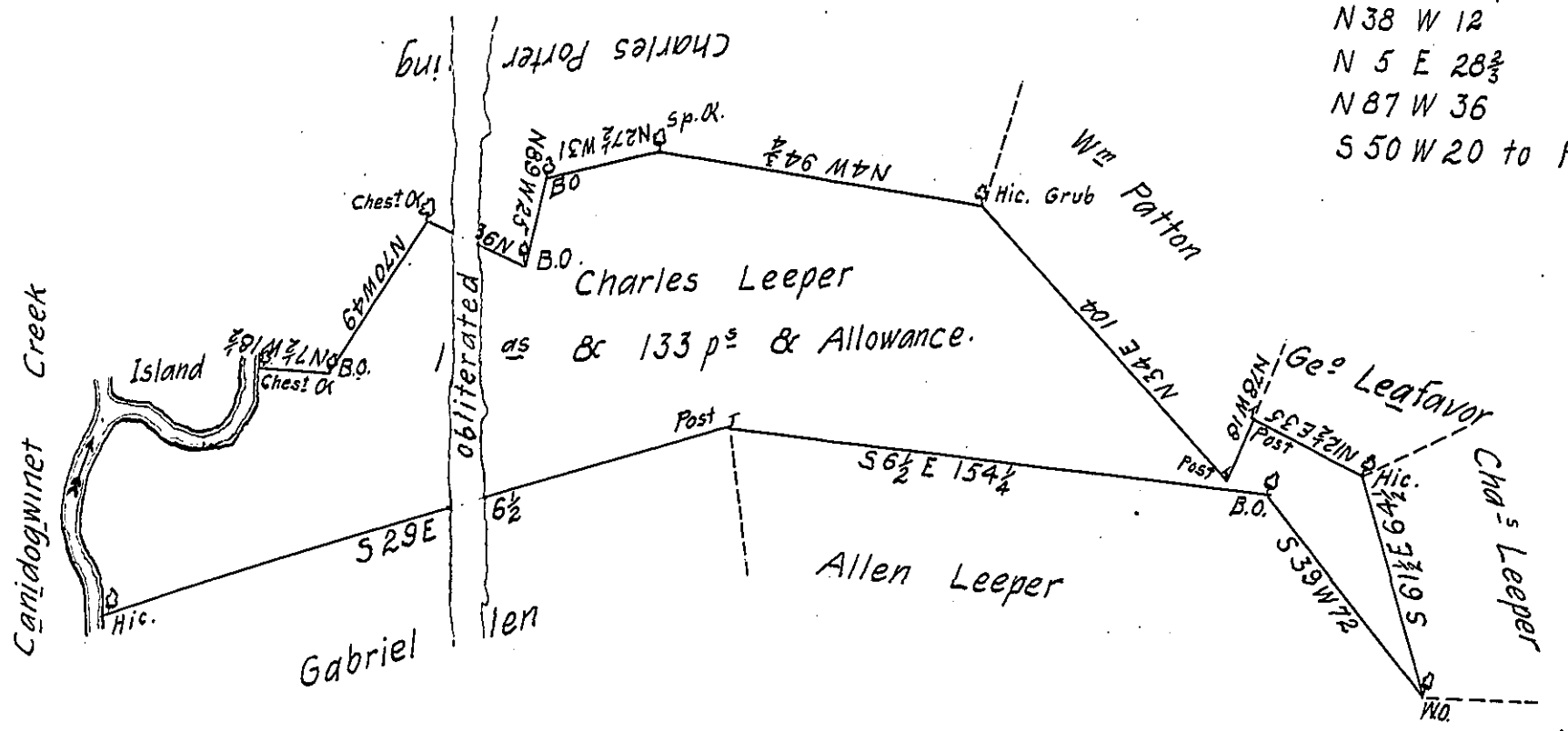


Courses and Distances up the Creek.
from the Chesnut Oak = N 86 W 22 p^s

- N 38 W 12
- N 5 E 28 ²/₃
- N 87 W 36
- S 50 W 20 to Hic.



The Draught o(obl) Tract of Land Situate in West
 Pennsborough Township Cumberland County Containing One Hundred
 and Sixteen Acres and 133 Perches and Allowance of Six
 pCent for Roads & ^{ca} Surveyed November 4th 1786 in
 pursuance of a Warrant to Charles Leeper Dated April
 15th 1786.

p^s Sam^l Lyon D.S.

To John Lukens Esq^r }
 Surveyor General. }

IN TESTIMONY that the above is a copy of the original remaining on file in
 the Department of Internal Affairs of Pennsylvania, made
 conformably to an Act of Assembly approved the 16th day of
 February, 1833, I have hereunto set my Hand and caused
 the Seal of said Department to be affixed at Harrisburg,
 this thirtieth day of August 1905.

Isaac R. Brown
 Secretary of Internal Affairs.